



icon
compact

icon collection

l'intramontabile texture del cemento
icona senza tempo
unicomstarker ne ripropone l'essenziale matericità
declinata in cinque speciali nuances
per architetture contemporanee

the imperishable concrete texture
everlasting icon
unicomstarker introduces this essential material
in five special hues
for contemporary architectures

bone white

dove gray

gun powder

taupe back

jet black



icon dove gray
45 x 90 18" x 36"

unicomstarker

icon collection



dove gray



icon dove gray
60 x 60 + 30 x 60
24" x 24" + 12" x 24"



icon dove gray
60 x 60 + 30 x 60
24" x 24" + 12" x 24"



icon dove gray
60 x 60 + 30 x 60
24" x 24" + 12" x 24"



unicomstarker

icon collection



icon bone white
45 x 90 + 15 x 90
18" x 36" + 6" x 36"

bone white



icon bone white
45 x 90 18" x 36"



icon taupe back
80 x 80 32" x 32"

unicomstarker

icon collection



taupe back



icon taupe back
80 x 80 32" x 32"



icon taupe back
80 x 80 32" x 32"



icon gun powder
60 x 60 24" x 24"

unicomstarker

icon collection

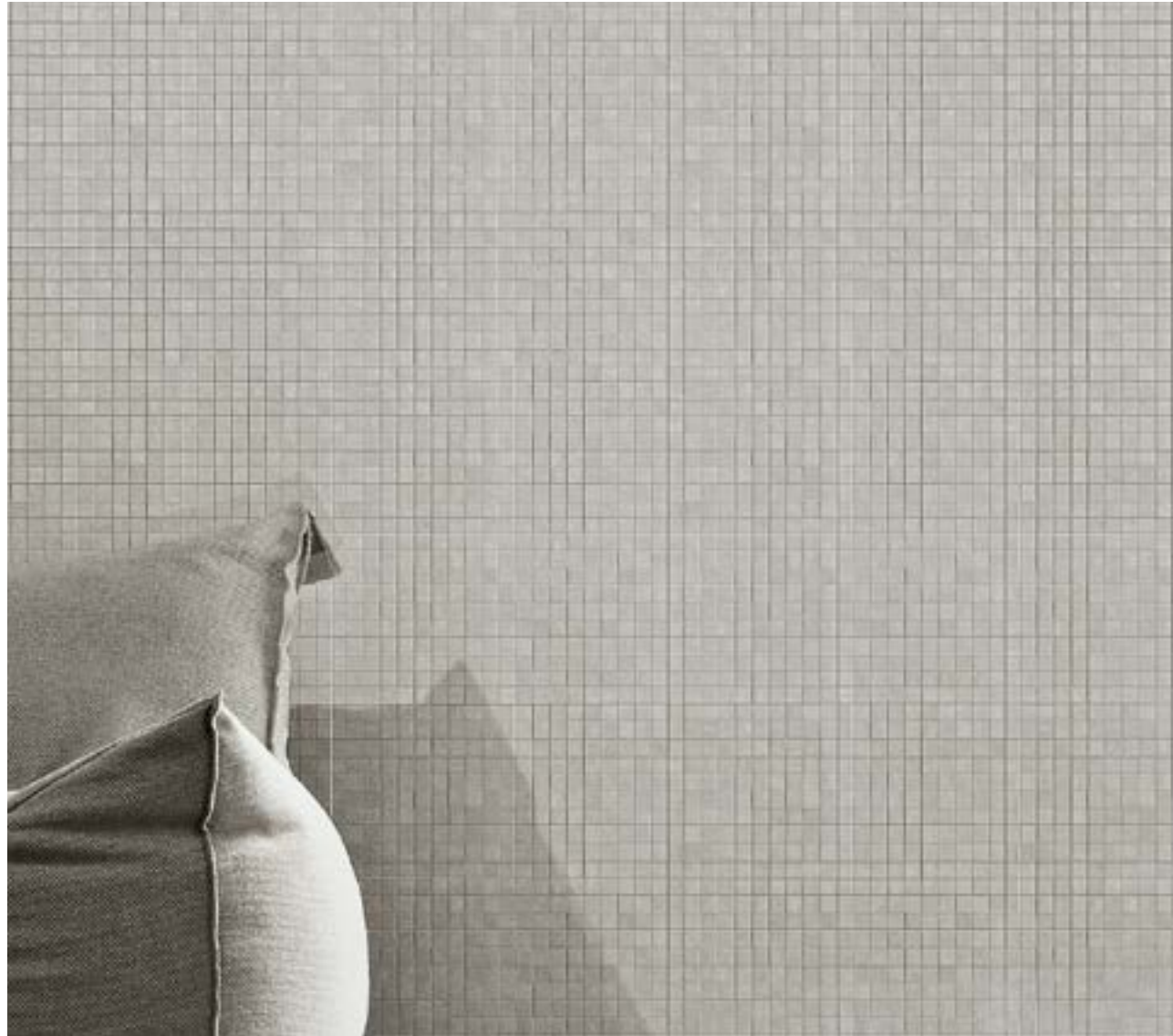


gun powder





icon gallery
15 x 90 6" x 36"



dove gray mosaico



icon dove gray mosaico
30 x 30 12" x 12"



icon jet black
80 x 80 32" x 32"

unicomstarker

icon collection



jet black





taupe back stripes

tones

bone white

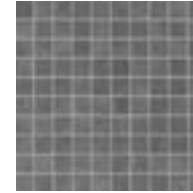
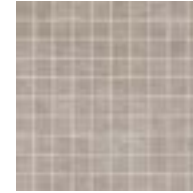
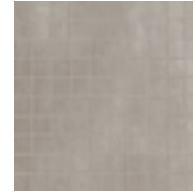
dove gray

gun powder

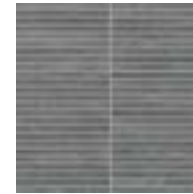
taupe back

jet black

mosaic



stripes





icon tiny 1
20x20 8" x 8"



icon variation 1
60x60 24" x 24"

icon special



variation 1



variation 2

rettificato 60 x 60 24" x 24" 61

lappato rett. 60 x 60 24" x 24" 63

tiny 1



tiny 2



rettificato 20 x 20 8" x 8" 79

lappato rett. 20 x 20 8" x 8" 81

disponibile in 18 soggetti 18 subject available



icon variation 2
60 x 60 24" x 24"



esagono



icon esagono blend
21 x 18,2 8¹⁷/₆₄" x 7²³/₃₂"



icon esagono blend
21 x 18,2 - 8,176" x 7,23"



bone white
22.5%



dove grey
22.5%



gun powder
22.5%



jet black
10%



taupe back
22.5%

icon blend



icon esagono blend
21 x 18,2 8,176" x 7,23"

formati sizes formate formats

rettificato 60 x 120 24" x 48" **66**

rettificato 15 x 90 6" x 36" **62**

rettificato 45 x 90 18" x 36" **57**

rettificato 80 x 80 32" x 32" **65**

rettificato 60 x 60 24" x 24" **54**

grip rettificato 60 x 60 24" x 24" **55**

rettificato 30 x 60 12" x 24" **51**

lappato rett. 80 x 80 32" x 32" **68**

lappato rett. 60 x 60 24" x 24" **56**

100 tessera 3.05 x 3.05

50 tessera 1.2 x 1.5

mosaico 30 x 30 12" x 12" **140**

stripes 30 x 30 12" x 12" **28**

esagono 21 x 18.2 8_{17/64}" x 7_{2/3}" **54**

prevedere fuga di almeno 2 mm sul monoformato e necessariamente 3 mm sul multifornato.
leave joints of at least 2 mm in width when laying a single size and, obligatorily, 3 mm when laying a combination of both sizes.
prevoir des joints de minimum 2 mm entre les carreaux pour pose monoformat et de 3 mm sur tous les multifornats.
wir empfehlen bei der verlegung eines formats eine fugenbreite von 2 mm, bei einem mischverband eine fugenbreite von 3 mm.

pezzi speciali special items pièces especiales fornteile

gradino rett. 30 x 60 12" x 24" **33**

gradino rett. grip 30 x 60 12" x 24" **34**

gradone costa retta 30 x 60 x 4 12" x 24" x 1_{2/3}" **115**

gradone costa retta grip 30 x 60 x 4 12" x 24" x 1_{2/3}" **118**

gradone ang. costa retta dx/sx 30 x 30 x 4 12" x 12" x 1_{2/3}" **118**

gradone ang. costa retta dx/sx grip 30 x 30 x 4 12" x 12" x 1_{2/3}" **120**

elemento a L rett. 30 x 60 x 5 12" x 24" x 2" **49**

elemento a L rett. grip 30 x 60 x 5 12" x 24" x 2" **50**

battiscopa smaltato rett. 7 x 60 3" x 24" **15**

battiscopa smaltato rett. 9.5 x 80 4" x 32" **24**

soluzioni di posa laying solution propositions pour la pose verlegungsvorschläge

60 x 60 24" x 24" (3pz.) **66.6 %**

30 x 60 12" x 24" (3pz.) **33.3 %**

30 x 60 12" x 24" (3pz.) **57.15 %**

45 x 90 18" x 36" (1pz.) **42.85 %**

15 x 90 6" x 24" (6pz.) **50 %**

45 x 90 18" x 24" (2pz.) **50 %**

caratteristiche tecniche technical features carateristiques techniques technische eigenschaften

assorbimento d'acqua water absorption absorption d'eau wasseraufnahme **<0,5%**

resistenza alla flessione breaking strength resistance a la flexion biegezugfestigkeit **35 N/mm²**

resistenza agli acidi resistance to acid resistance aux acides säurebeständigkeit **GLA**

resistenza al gelo frost resistance résistance au gel frostbeständigkeit **resiste frost proof aucune attération keine änderung**

resistenza alle macchie stain resistance résistance aux taches flackenbeständigkeit **4**

planarità flatness planéité ebenheit **UNI EN ISO 10545/2 ± 0.5 % conforme - complying conforme - erfüllt**

spessore thickness épaisseur dicke **30 x 60 60 x 60 ≠ 9.5mm**

spessore thickness épaisseur dicke **60 x 120 ≠ 10mm**

spessore thickness épaisseur dicke **45 x 90 80 x 80 15 x 90 ≠ 11mm**

naturale DIN51097 DIN51130 coefficiente d'attrito (scivolosità) static coefficient of friction A+B **R10**

DCOF BOT3000 coefficient de friction (glissement) reibungskoeffizient (schlüpfrigkeit) **>0.42**

grip DIN51097 DIN51130 coefficiente d'attrito (scivolosità) static coefficient of friction A+B+C **R11**

coefficient de friction (glissement) reibungskoeffizient (schlüpfrigkeit)

variazioni cromatiche color shade variations variation de nuance nuance variations **V2 variazione leggera V2 slight variation V2 légère variation V2 leichte variation**

imballi packing embalages verpackung

	spessore thickness	pezzi/sc pcs/box	mq/sc sqm/box	kg/sc kgs/box	sc/pl box/pal	mq/pl sqm/pal	kq/pl kgs/pal	
15x90	rettificato	6	0.81	20.00	48	38.88	960.00	
30x60	rettificato	9.5	6	1.08	23.40	40	43.20	936.00
45x90	rettificato	11	2	0.81	20.00	40	32.40	800.00
60x60	rettificato - lapp./rett.	9.5	3	1.08	23.50	40	43.20	940.00
60x60	rettificato grip	9.5	3	1.08	23.50	40	43.20	940.00
80x80	rettificato - lapp./rett.	11	2	1.28	32.80	40	51.20	1312.00
60x120	rettificato	10	2	1.44	33.60	36	51.84	1209.60
21x18.2	esagono	16	0.46	10.15	100	45.90	1015.00	
30x30	mosaico	11	0.99	21.45	54	53.46	1158.30	
30x30	stripes	11		21.45				
60x60	variation 1/2 - lappato	3	1.08	23.50	40	43.20	940.00	
20x20	tiny 1/2 - lappato	25	1.00	21.76	56	56.00	1218.56	
7x60	battiscopa smaltato rettificato	12		12.60				
9.5x80	battiscopa smaltato rettificato	8		15.12				
30x60	gradino rettificato	8		31.20				
30x60	gradino grip rettificato	8		31.20				
30x60	gradone costa retta rettificato	4		17.20				
30x60	gradone costa retta rettificato grip	4		17.20				
30x30	gradone angolare costa retta dx	2		4.30				
30x30	gradone angolare costa retta dx grip	2		4.30				
30x30	gradone angolare costa retta sx	2		4.30				
30x30	gradone angolare costa retta sx grip	2		4.30				
30x60	elemento a L rettificato	4		17.20				
30x60	elemento a L rettificato grip	4		17.20				

il peso riportato è comprensivo del pallet di supporto
the indicated weight includes the supporting pallet
le poids indiqué est compris de la palette de support
das angegebene gewicht versteht sich einschließlich der palette



informazionitecniche technical informations



unicomstarker

via flumendosa 7
41042 fiorano modenese
modena italy
T +39 (0)536 926011
F italy +39 (0)536 926038
F world +39 (0)536 926033
F europe +39 (0)536 926023

unicomstarker.com